



## Zamac Nail In

### DESCRIPTION

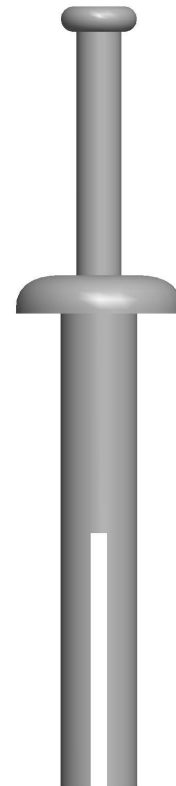
Zamac Nail In consisting of a zinc alloy expanding body with hammer-in steel pin. For light duty fastenings in concrete and masonry. The Zamac Nail In are ideal for all masonry materials including concrete, hollow block, brick and precast.

### TYPICAL APPLICATION

- ✓ Brick Ties and Masonry Anchorage
- ✓ Electrical fixtures
- ✓ Stud wall
- ✓ Flashing
- ✓ Drywall Track
- ✓ Conduit fitting
- ✓ Cladding
- ✓ Cable Trays

### FEATURES

- Low-profile mushroom head provides a nice finish and tamper proof fastening
- Consistent load values ensure safe light-duty fastenings in concrete and masonry
- Impact expansion by hammer, no setting tool is needed
- Designed for easy push-through fastenings, even in bottomless holes
- Choice of carbon steel or stainless steel finish allows outdoor or indoor use



### MATERIAL SPECIFICATION

Component	Mechanical Properties	Standard
Anchor body	Zamac Alloy	EN12844:1998
Drive pin	Carbon steel	EN 10263
	Stainless steel 304	EN10086
Corrosion protection (Carbon steel)	Zinc plating, Min.5 µm	Zinc plating, Min.5 µm

### ANCHOR SELECTION

Part Number	Size	Diameter (mm)	Length (mm)	Drill Dia (mm)	Box (pcs)
600105022	M5 × 22	5	22	5	200
600106030	M6 × 30	6	30	6	100
600106040	M6 × 40	6	40	6	100
600106050	M6 × 50	6	50	6	100
600106065	M6 × 65	6	65	6	100

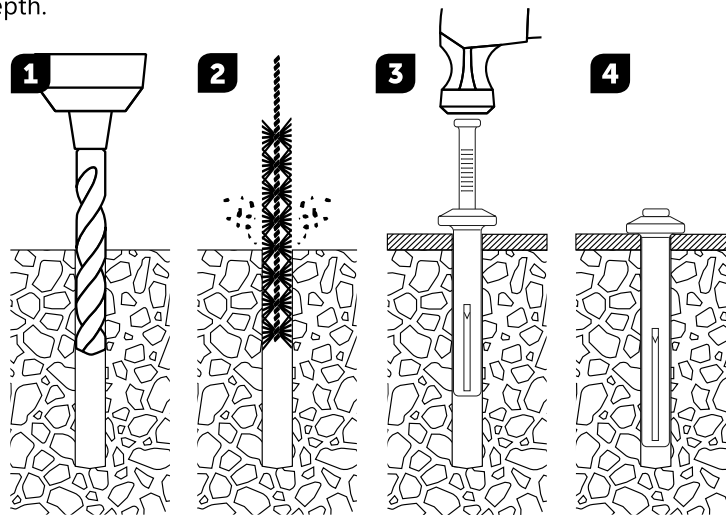
## Zamac Nail In



## INSTALLATION

Size	d (mm)	L (mm)	d <sub>o</sub> (mm)	h <sub>1</sub> (mm)	t <sub>fix</sub> (mm)	h <sub>ef</sub> (mm)
M5 × 22	5	22	5	37	7	15
M6 × 30	6	30	6	45	10	20
M6 × 40	6	40	6	55	20	20
M6 × 50	6	50	6	65	30	20
M6 × 65	6	65	6	80	45	20

\* d = Anchor diameter, L= Total length, d<sub>o</sub>= Drill hole diameter, h<sub>1</sub>= Min. Drill hole depth, t<sub>fix</sub>= Fixture thickness, h<sub>ef</sub>=Effective anchorage depth.



## PERFORMANCE DATA

### Average Ultimate Loads

Anchor diameter (mm)	Embedment (mm)	Concrete C20/C25	
		Pullout (KN)	Shear (KN)
Φ 5	19.1	2.22	3.23
Φ 6	19.1	3.16	4.89
Φ 6	25.4	4.54	4.8

### NOTE

Apply Safety Factor to ensure the working load per anchor does not exceed 1/4 of the tabulated ultimate load, under static loading condition.