



Pro Gold Hammer In Fixings

DESCRIPTION

A simple, yet effective hammer-in plasterboard fixing. Quick and easy to fit with serrated edges for easier insertion. Suitable for 9.0mm - 13.0mm plasterboard thickness.

TYPICAL APPLICATION

- ✓ Light shelving
- ✓ Plumbing
- ✓ Electrical
- ✓ Picture
- ✓ Tower Rails
- ✓ Bathroom accessories
- ✓ Brackets, grips and hooks

FEATURES

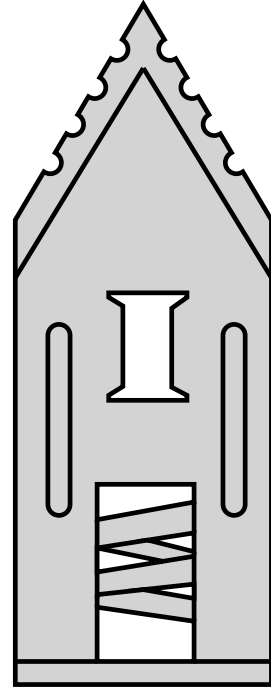
- Hammer-in plug, no drill required
- Flush head
- Screw guide and screw placement channel
- Plug anchors itself when tightening the screw
- Removable with very low damage to the wall
- Better fire resistance than plastic plugs

MATERIAL SPECIFICATION

- Material: Spring steel, C1050
- Heat treatment: HRC 37-42
- Corrosion protection: Zinc plating, min.5 µm

ANCHOR SELECTION

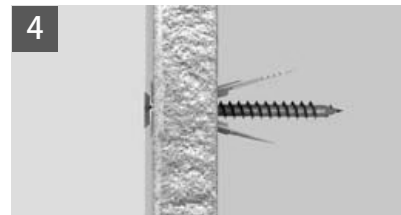
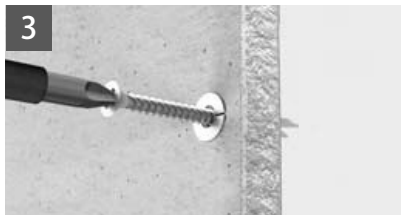
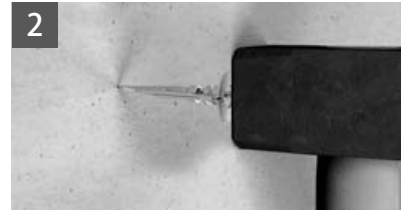
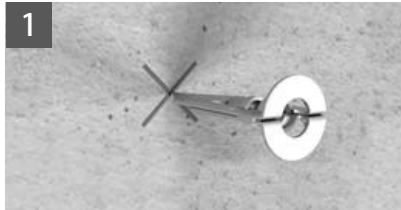
Part No.	Size	Grip Range (mm)	Screw Size (mm)	Length (mm)	Box (pcs)
600504030	4 × 30	9-13	4.0	30	100



Pro Gold Hammer In Fixings



INSTALLATION



NOTE

Combined with wood screws 4.0 mm, min length 30 mm)