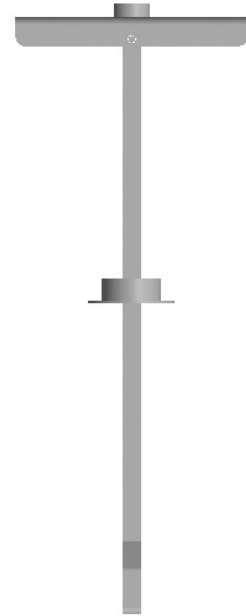




Snap Toggle Anchor

DESCRIPTION

Snap toggle Anchors are ideal for installing Furniture, Cabinets, T.V. Mounts, and Window Treatments. With a wide variety of base materials ranging from drywall to concrete block, The channel pivots on the durable installation legs. The sliding cap zips down the legs to securely "capture" the wall between the channel and the cap. The legs snap off easily use with the wall, but do not break prematurely.



TYPICAL APPLICATION

- ✓ Flat panel TV's
- ✓ TV mounts
- ✓ Lighting fixtures
- ✓ Window treatments
- ✓ Marine applications
- ✓ Hand rails • Grab bars
- ✓ ADA hardware
- ✓ Office furniture
- ✓ Heavy machinery
- ✓ Partitions
- ✓ Cabinets
- ✓ Shelving
- ✓ Solar panels
- ✓ Garage doors
- ✓ Sinks
- ✓ Heavy fans
- ✓ Roofs & decking

FEATURES

- Heavy-Duty Wall Anchors
- Smallest drill hole for each bolt size— M6 wing toggle needs 50% larger hole
- High strength—holds up to 2x the load of an old-fashioned wing toggle of same bolt size
- Reusable in same hole— remove the bolt without losing the anchor
- Does not destroy wall or ceiling—plastic cap & metal channel centers bolt & prevents abrasion for wall thickness up to 92 mm

MATERIAL SPECIFICATION

Component	Mechanical Properties	Standard
Metal Chaneel	Carbon steel	EN 10263
Plastic Leg	Nylon, PA 6	--
Corrosion protection	Zinc plating, min.5 μ m	EN ISO 4042

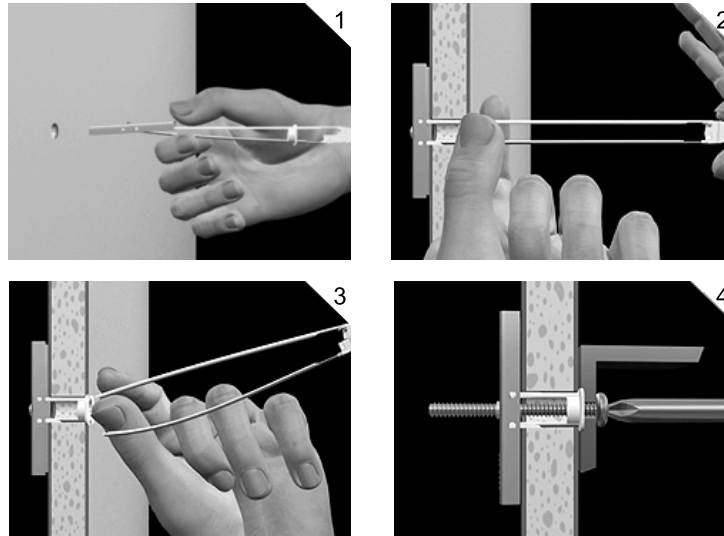
ANCHOR SELECTION

Part No.	Size	Grip Range (mm)	Screw Size	Drill Dia (mm)	Box (pcs)
600405	M5	9.5-92	M5	13	50
0600406	M6	9.5-92	M6	13	50



Snap Toggle Anchor

INSTALLATION



PERFORMANCE DATA

Plastic Toggle Drywall Anchor Allowable Loads*

Direction	Drill Size (mm)	Drywall		Concrete C20/C25	
		Safe Load (KN)	Failure Load (KN)	Safe Load (KN)	Failure Load (KN)
Shear Load 13	13	0.55	1.09	0.89	3.5
Tension Load	13	0.26	1.05	0.89	3.5