



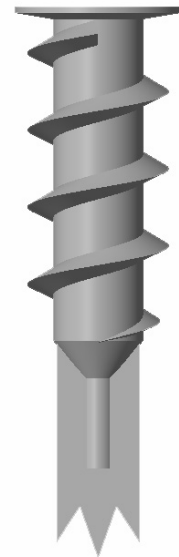
## Zinc Alloy Speed Drive Anchor

### DESCRIPTION

The Zinc Alloy Speed Drive Anchor is a self-drilling designed for fast and reliable fastenings in drywall

### TYPICAL APPLICATION

- ✓ Picture
- ✓ Paintings
- ✓ Lighting
- ✓ Coat hangers
- ✓ Electrical
- ✓ Rails
- ✓ Small wall-mounted shelves



### FEATURES

- No drill required - simply pierce paper skin and screw home.
- Can be used in single and double thickness plasterboard
- Flange prevents accidental push through in plasterboard.
- Recommended for fire resistant application

### MATERIAL SPECIFICATION

- Material: Die-cast zinc, DIN 1734

### ANCHOR SELECTION

Part No.	Size	Diameter (mm)	Length (mm)	Screw Dia (mm)	Box (pcs)
600713031	13 × 31	13	31	4.0	100
600713042	13 × 42	13	42	4.0	100

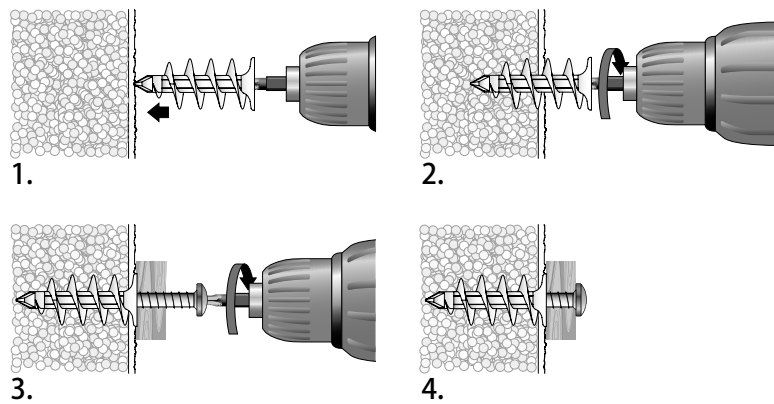
## Zinc Alloy Speed Drive Anchor



### INSTALLATION

Size	d (mm)	L (mm)	t <sub>fix</sub> (mm)
13 × 31	13	31	12
13 × 42	13	42	23

\* d = Anchor diameter, L = Total length, T<sub>fix</sub> = Max.fixture thickness



### PERFORMANCE DATA

Gypsum Wall Board Thickness	12.5 mm		19.0 mm	
	Pullout (KN)	Shear (KN)	Pullout (KN)	Shear (KN)
Allowable Loads*	0.07	0.18	0.1	0.27

\* Based on using a safety factor of 5.0

#### NOTE

Predrill with a 8 mm drill bit when fixing to gypsum fibreboard and double-planked gypsum platerboard.